



## GF-THR B737 Throttle Handles Cockpit Control System



Congratulations on your purchase of a **GoFlight GF-THR 737 Throttle Handles** part of the extensive family of GoFlight GF-AC Cockpit Control System modules. The GF-THR 737 is designed to operate with a wide variety of Aircraft and is sure to make your flight simulation experience more realistic and enjoyable.

The steps below will assist in the installation, configuration and operation of the GF-THR 737 Handles. Following these instructions will help to get you up in the “virtual skies” as quickly as possible.

### Installing the GF-Config Software

**NOTE** If you own other GoFlight hardware and have already installed the most current version of software on your system, you do not need to install the software again. Simply skip the software installation steps in the instructions below.

1. Get on line and go to [www.goflightinc.com](http://www.goflightinc.com).
2. On the GoFlight home page click Support.
3. Click on “GF Config x.xx” to download the latest module drivers and configuration software.
4. Click “Run” or “Save” and follow the instruction to install the software.

If the software installer detects that GoFlight software is already installed on your system, it will prompt you to overwrite. Click the **Yes** button to overwrite the existing version of GoFlight software. This is useful if you wish to keep the configuration settings for other GoFlight modules installed on your system.

---

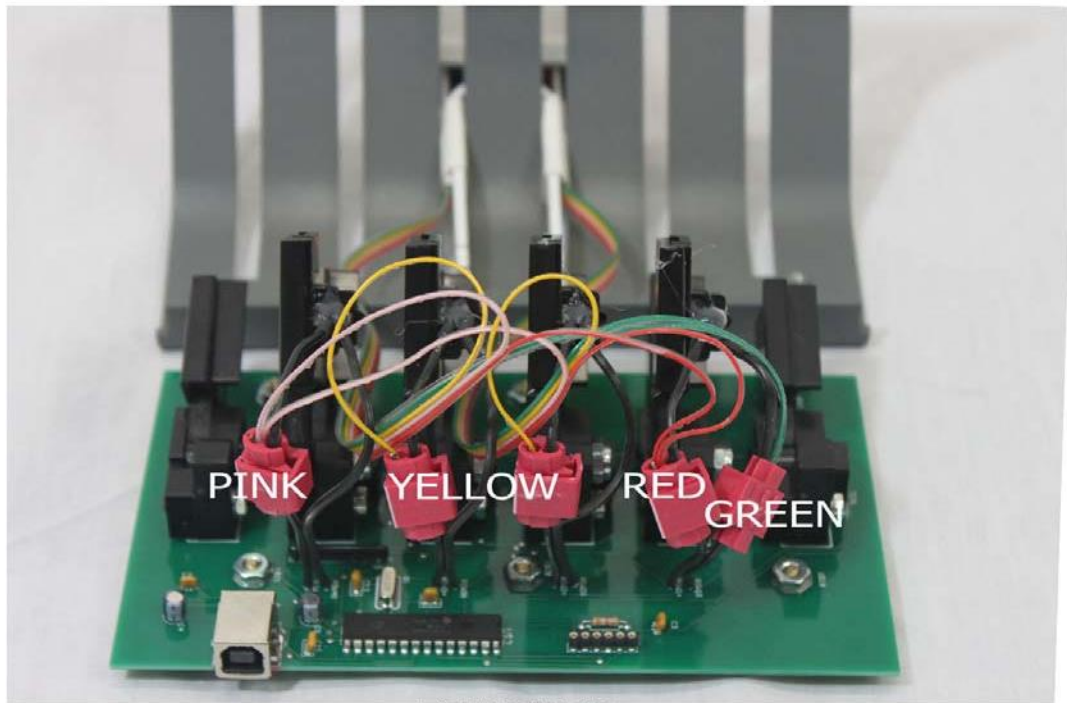
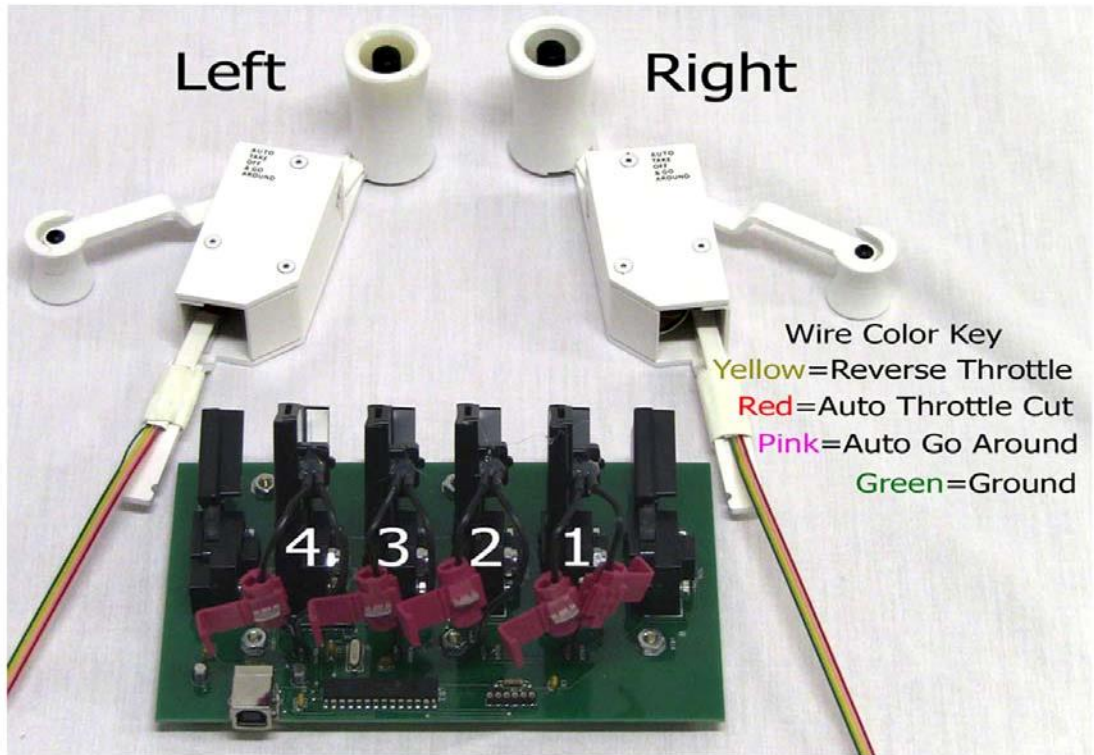
## Installing the GF-THR 737 Throttle Handles

### Steps to Install GF-THR

1. Loosen the three (3) bottom 1/4" screws in bottom rear row of case. (Do Not Remove Yet)
2. Remove two (2) screws on top, back of case.
3. Remove three 3/8" screws in bottom front row of case. Note: Front screws are longer than rear screws.
4. Gently remove top cover. (Please pay attention to PC Board alignment)
5. Remove remaining screws from step 1.
6. Locate four (4) switch wires soldered and glued to board.
7. Separate wires (not from board but from one another) 1" from board mount.
8. Gather your face plate, and new GF-THR handles.
9. Run the handles with connecting wires through the slots on the metal cover (#3-#4) of cover paying attention to the Left and the Right handles being properly placed.
10. Locate ground wires "GREEN", and twist together both L and R handle ground wires.
11. Perform the same procedure done with A/T Disengage, "RED".
12. Perform the same procedure done with Auto Shut Off & Go Around, "PINK".
13. Locate ground wire soldered to board, place wire connect on ground wire, fold exposed ground wire "GREEN" from handles back onto itself, insert handle wire into open hole on connector and close connector and squeeze with pliers.
14. Locate the "hot" soldered switch wires on boards switch pots #1 and #4. Connect either A/T Disengage "RED" wires or Auto Shut Off & Go Around "PINK" to hot soldered wire on board the same as performed in task #13 to one of the throttle arms hot wires on either switch pot #1 or #4
15. Perform same task with remaining A/T Disengage or Auto Shut Off & Go Around to which ever switch pots remains, #1 or #1.
16. Two (2) wires remaining "YELLOW", Left throttle handle connects to switch pot #2. Right gets connected to throttle handle #3.
17. Slide board back into base and insert three (3) short 3/8" screws into back three (3) spots. (leave loose for placing cover later)
18. Place cover, with handles back into position.
19. Gently slide lever arms into Throttle Arm Holders.
20. Screw three (3) long 1/4" screws in front row and tighten all base screws
21. Install two (2) screws on back.
22. Plug into system, open GF-Config and program two button functions for desired function.
23. ENJOY!!!

24.

Wiring Example



FINISHED

## Before you start setting up THR 737 handles

First you need to calibrate your TQ6, so open your Control Panel and then Game Controllers. The TQ6 should be in the games controllers' list. Choose your TQ6, and then click on properties. You should now see a picture of the TQ6 in the calibration window, like the example below. Now click on calibrate and follow the instructions.

NOTE: Calibrate all lever Arms.

NOTE: Windows 7 Users

How to locate the Game controllers in windows 7

Open the control panel

Find Devices and printers

Find TQ6

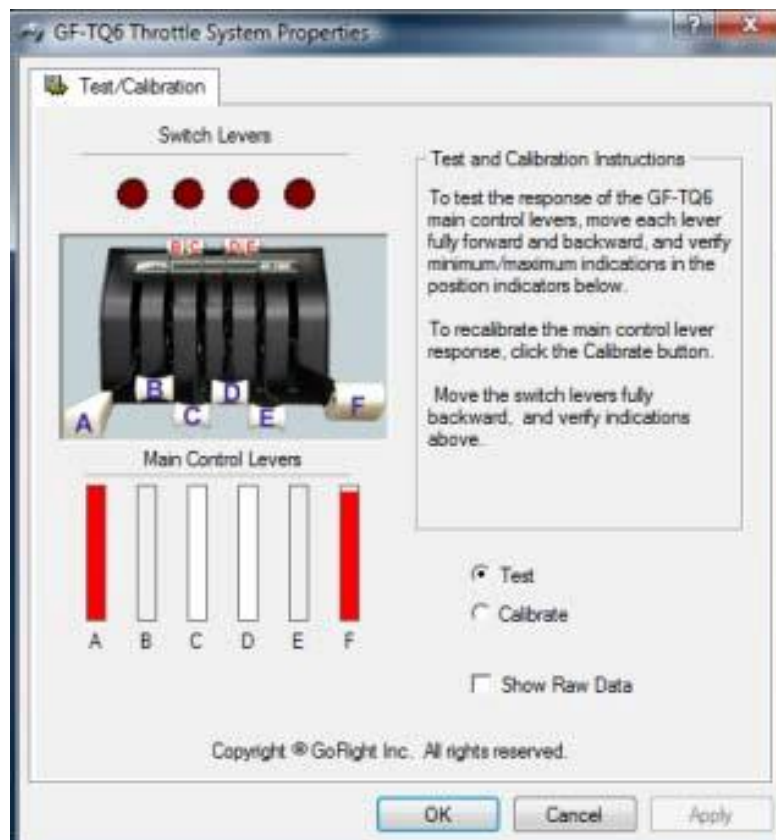
Right Click on the TQ6

Choose Game settings

Calibrator should open up

Click Properties

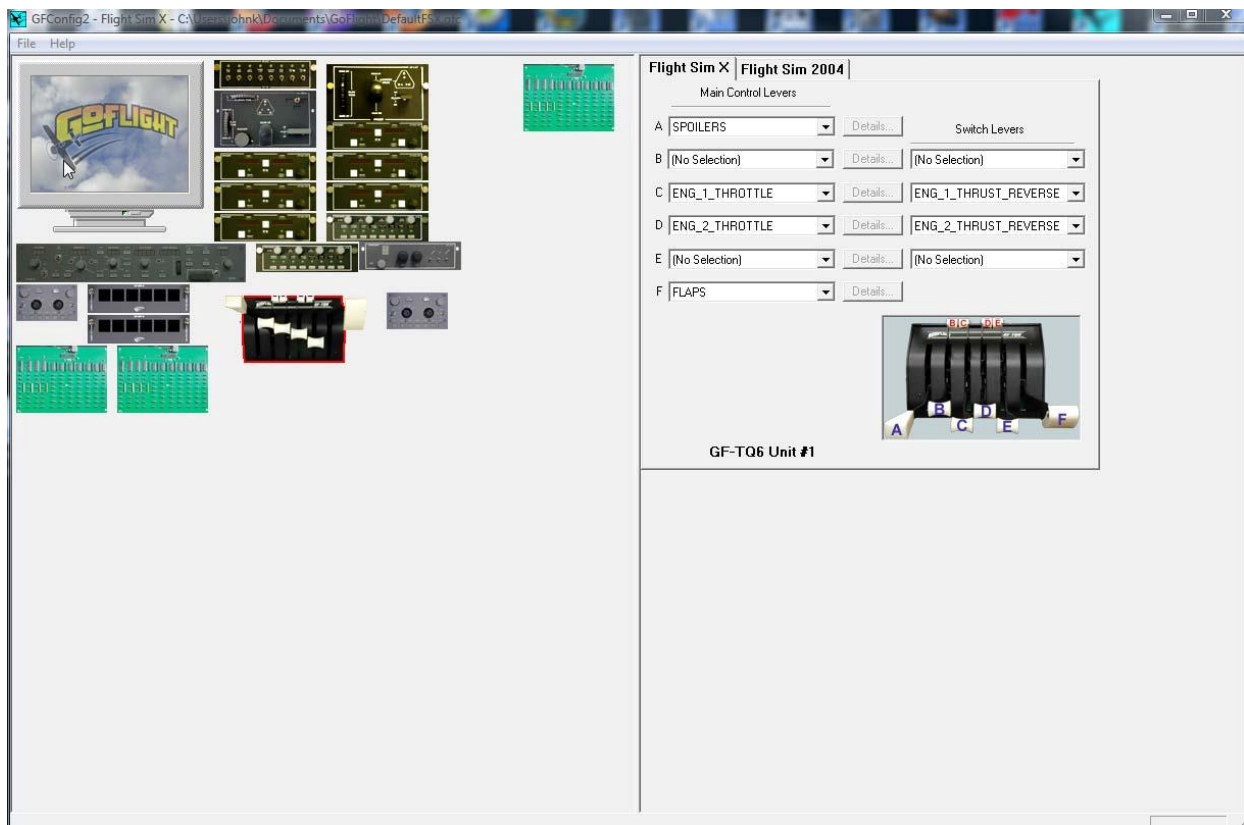
Then calibrate.



Example

## Configuring your GF-THR 737 Throttle Handles

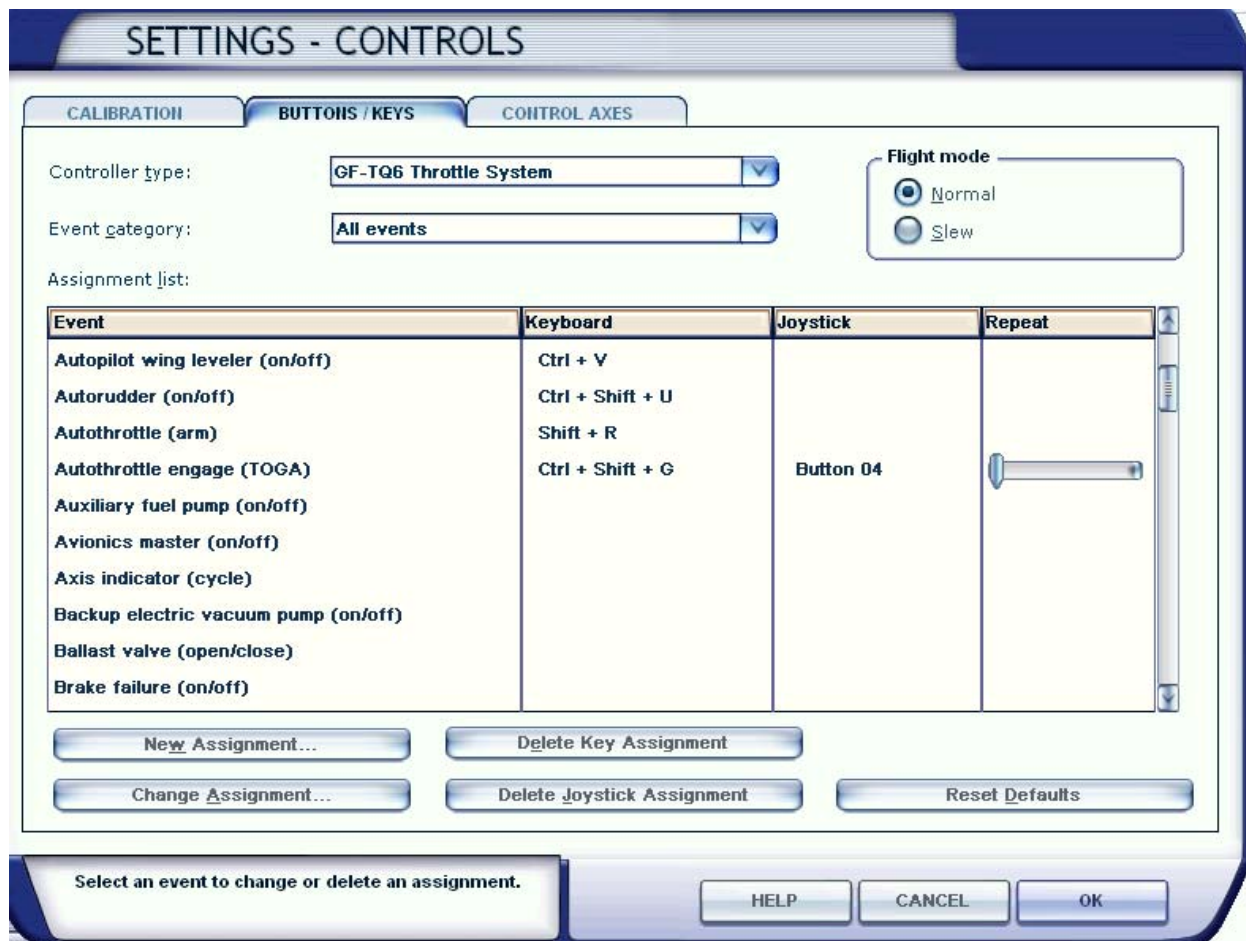
First, open GF-Config and configure your reverser arms. Open GF-Config and click on the picture of the TQ6 on the left side of the program window. Now, on the right side you will see the programming for the TQ6. You will need to set Engine 1 and 2 Thrust Rev as shown in the example below. After you have set the Reverser arms, you will need to set the throttle Arms C and D for engine 1 and 2 as shown in the example below. After you have programmed your throttle arms, you will also need to program your Speed Brake and Flaps, like in the example below. Once you have completed these steps, save and exit GF-Config.



Example

## Setting up your TOGA and Auto Throttle Button

The TOGA button can be programmed thru FSX FS9. To program, go to settings, then controls, then click on the Buttons/Key tab. Make sure that your TQ6 is in the controller type window. Now, scroll down and find the TOGA function. Double click on the function, and then a box will come up asking you to hit a button. Hit one of the TOGA buttons on your THR Handles. Now the function is set. The Auto Throttle Disengage button can be programmed thru FSUIPC FSX; FS9 does not have this function.



### Example

To Program the Auto Throttle Disengage use FSUIPC AP Panel Speed off setting.

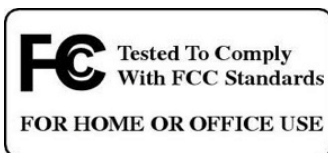
If you have any questions or problems setting up your GF-THR 737 Handles you can contact our Tech Support At [techsupport@goflightinc.com](mailto:techsupport@goflightinc.com) or call 503-895-7020

### **GF-THR Warranty**

This product is warranted to the original purchaser to be free from defects in materials and workmanship for a period of one (1) year from the date of purchase. During this warranty period, GoFlight Technologies, Inc. ® (“GoFlight”) will, at its option, repair or replace, at no charge, any component determined to be defective. The liability under this warranty is limited to the repair and/or replacement of the defect or defective part, and does not include shipping expenses. This warranty does not apply if, in the determination of GoFlight, this product has been damaged by accident, abuse, improper usage, or as a result of service or modification by anyone other than GoFlight.

NO OTHER WARRANTIES ARE EXPRESSED OR IMPLIED, INCLUDING BUT NOT LIMITED TO IMPLIED WARRANTIES OF SALABILITY AND FITNESS FOR A PARTICULAR PURPOSE. GOFLIGHT TECHNOLOGIES, INC. IS NOT RESPONSIBLE FOR CONSEQUENTIAL DAMAGES. SOME STATES DO NOT ALLOW EXCLUSION OR LIMITATION OF INCIDENTAL OR CONSEQUENTIAL DAMAGES, SO THE ABOVE LIMITATION OR EXCLUSION MAY NOT APPLY TO YOU.

This warranty gives you specific legal rights, and you may also have other rights which vary from state to state.



#### **GoFlight Technologies, Inc.**

163 SW Freeman Ave. Suite D, Hillsboro, Oregon, USA 97123

Phone: 1-503-895-0242

[www.goflightinc.com](http://www.goflightinc.com)

P/N GF-MCP\_Pro-vPOH-002 Revision 2.2 25Sep2010  
Copyright © 2010 GoFlight Technologies, Inc. All rights reserved.